

The Slam electronic code lock

Discard test batteries Insert 3 AA alkaline batteries into rear lock box. Good batteries should last in excess of approx. 12 months.

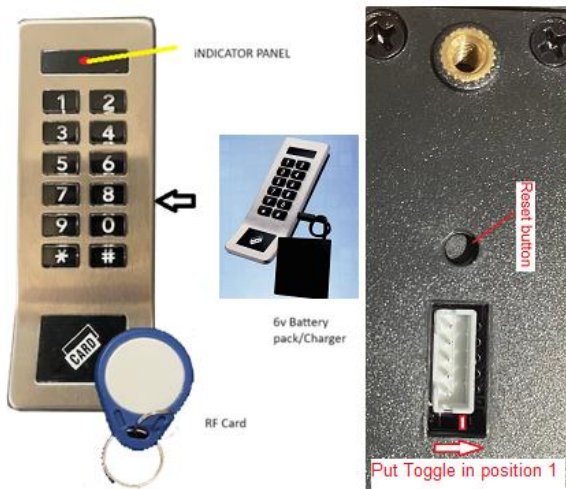
To set the new permanent lock code touch the Master RF card twice within a few seconds. The lock bolt will retract then the lock bolt will protrude again and the red light will flash. Within a few seconds while the red light is flashing enter the new user code. (2 digits minimum-9 digits maximum followed by #.) *While the red light is flashing a User RF card can be programmed this RF card will not be a Master RF card and can be used by a daily user.*

RF CARD > > New code # All previous user codes are deleted.

The Rf Master Card can be used to unlock the lock in an emergency. Keep the card somewhere safe. Beware accidentally touching the master touch card 3 times will delete all user codes and cards. A User RF card can be purchased and set for user use only. (Maximum 120 user cards) A 6v battery pack can also be purchased if required for emergency purposes.

To delete the user code touch the RF card three times while the red light is flashing. If the batteries are low then the red light will flash and beep 8 times when opening suggesting you replace the batteries. Replacing Batteries does not reset codes and Rf user card.

In an emergency use a 6V charger/ battery pack to power and open the lock using the user code or RF card.



****In case of problems.

See Video to set lock pin <https://www.australianparcelbox.com.au/image/catalog/Video/Set-Slam-Lock-Pin.mp4>

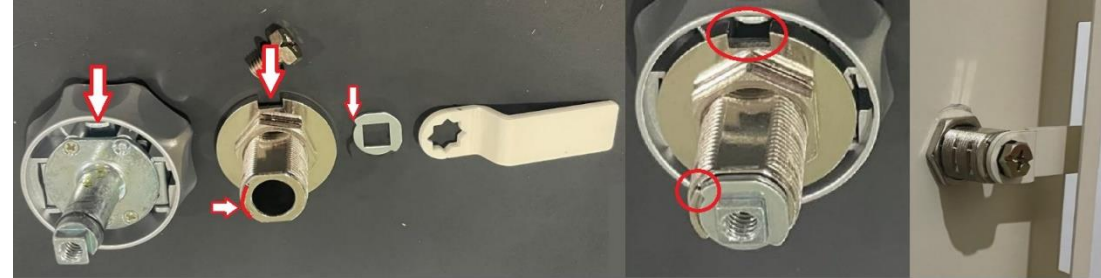
Reset Button = 3 long beeps = all cards, passwords deleted.

Make sure Function Toggle is in Position 1 on RH side.

Scan the RFID card = 3 long beeps sound Green light = lock and card are initialized. RFID card is now Master.

Mechanical Lock Operation Instructions

This is the correct way to re-assemble and fit the mechanical code lock. Cam can be Left or Right with door. Please note the orientation of parts and washers below. (Note Arrows and red arcs or circles)



The Lock code is factory set to "000"

Changing the code on a mechanical code lock

- First set the lock to factory open code (000).
- Push and **HOLD** the reset pin (located on the right-hand side of the cam lock) with the tool supplied or a sharp object.
- Select the code of your choice. Now let the reset pin go.

Keep this new code safely stored.

General Access by non-participating Couriers and Delivery Drivers

- It is a good idea to change your address with any online retail outlet who you regularly receive deliveries from. Your address should be changed to include the Parcel Box Code so that the driver can read the code on the Parcel once he arrives at your residence.

See the example below

Mr John Citizen

Parcel box code 123

270 Smith Street

Melbourne

Vic 3000

Thank you for your patronage and we hope you have many years of successful parcel/post.

Australian Parcel Box Team